

Product Overview

The MODA20X is a multi-output driver based on quartz oscillators, offering up to 20 distinct but phased locked outputs. The respective RF powers is driven through an external control which allow user for fast AM control.

Embedded power amplifiers offer up to 3W per output but for higher power, AA may propose external amplifiers.

FEATURES

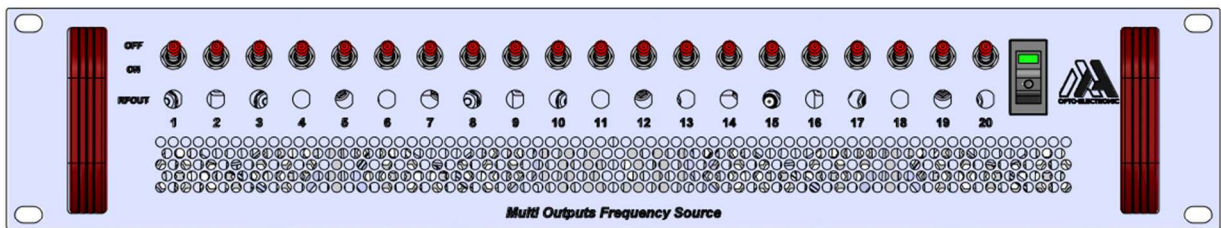
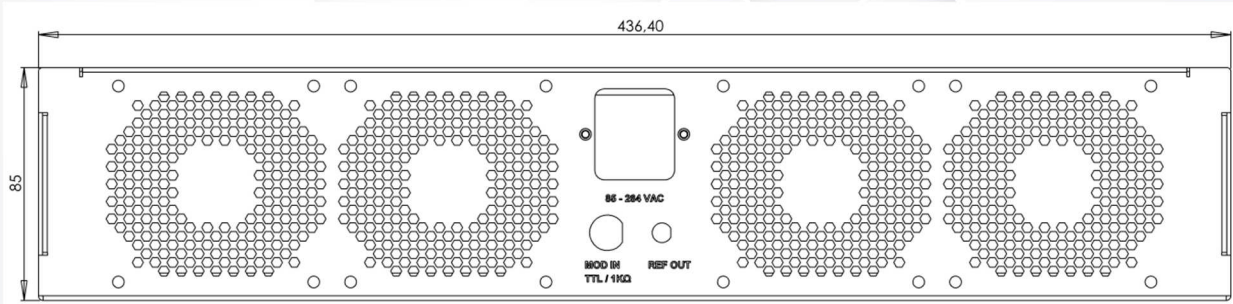
- Carrier frequency (MHz): Any up to 460Mz
- Up to 20 phase locked outputs.
- 20 x individual ON/OFF switches.
- Delay control (Option)
- RF power (W): 1, 2.5, 4, 10, 20



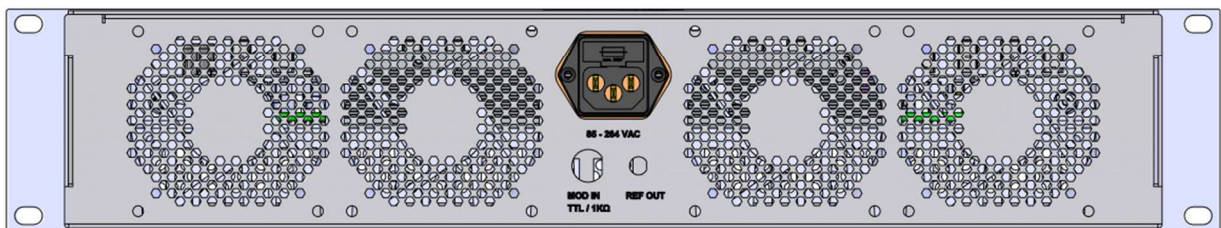
SPECIFICATIONS (T=25°C)

Parameter	Units	MODAxx
Carrier Frequency F (MHz)	MHz	35/ 40 / 80 / 110 / 160 / 110 / 180 / 200 / 250 / 350 Any fixed in 10-460
Number of outputs (X)		Up to 20 (phased locked)
Delay Control		Option – adjust delay between the outputs
Frequency Stability	ppm/°C	Nom +/- 1
Frequency Accuracy	ppm	< 50
Output RF Power (@1dB compression)	W	Up to 3 per output with embedded amplifier/
0 dBm output (REF out)		1 output 0dBm for frequency monitoring.
Power Supply Laboratory version	VAC	110 – 230
External Blanking input control (AM)		TTL/1Kohms – common to the 20 outputs
Rise Time/Fall time (10-90%) < 4 watts	ns	< 20 @40 MHz, < 10 @80 MHz < 8 @110 MHz, < 5 @180 MHz, < 3 @F>200MHz
Output Impedance	Ohms	50
VSWR		< 1.5/1
Extinction Ratio	dB	> 45
Input / Output Connectors		SMA
Size / Weight	mm ³	Rack 19", 2U
Operating Temperature	°C	10 to 40 (max Tcase 50°C)
Storage Temperature	°C	-40 to +70 Non condensing

OUTLINE DRAWING , mm.



FACE AVANT



FACE ARRIERE

